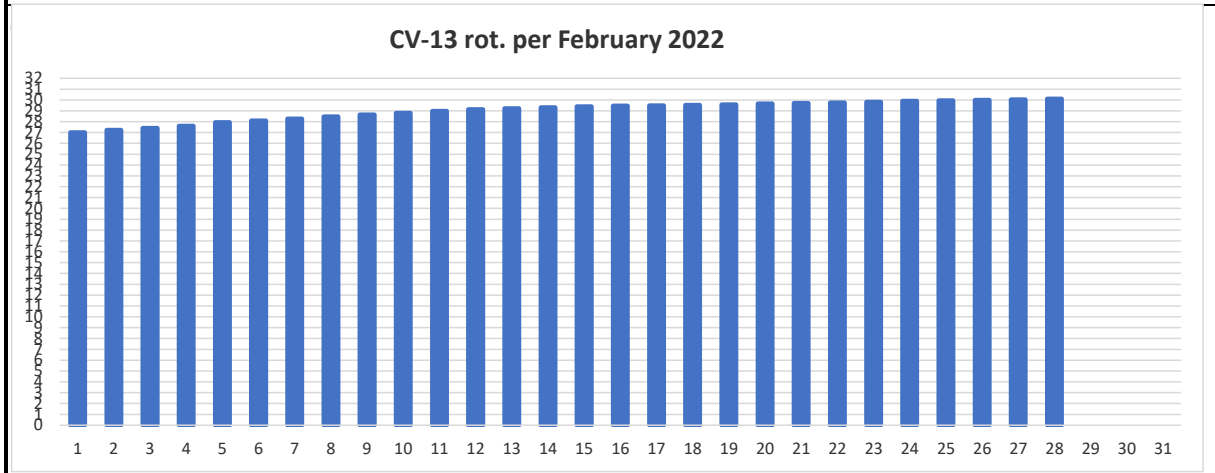
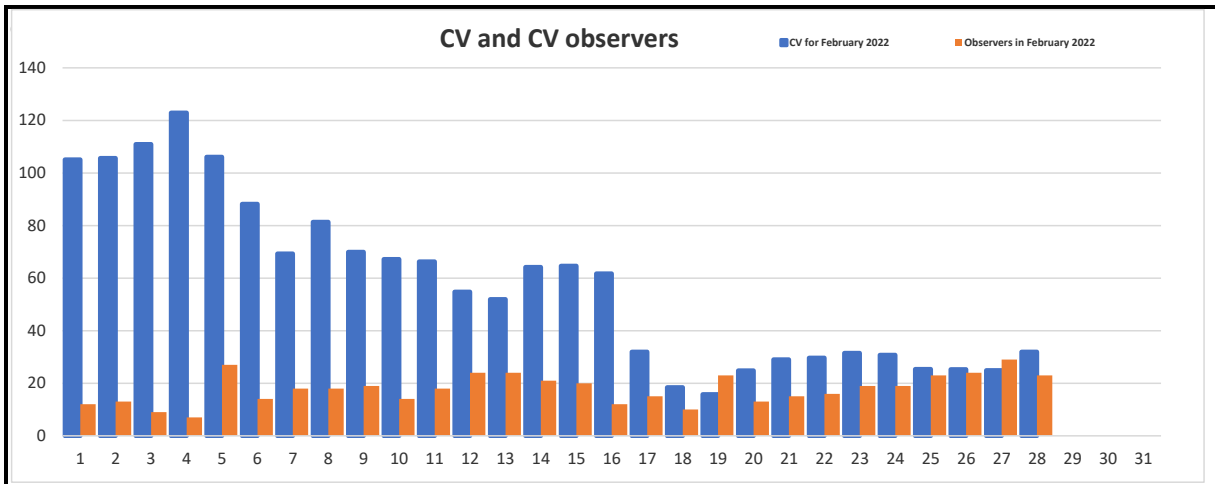


Results						
Date	CV	Obsrvrs	Regions 6 rot.	CV-USAF 6-rot.	CV-6 rot.	CV-13 rot.
1	105,08	12	3,28	49,62	44,70	27,00
2	105,62	13	3,30	50,29	45,20	27,23
3	110,89	9	3,32	50,96	45,59	27,41
4	122,86	7	3,34	51,77	46,03	27,59
5	106,07	27	3,36	52,38	46,74	27,93
6	88,21	14	3,37	52,62	46,97	28,10
7	69,33	18	3,37	52,56	47,10	28,26
8	81,33	18	3,38	52,70	47,29	28,46
9	69,95	19	3,39	52,80	47,46	28,64
10	67,21	14	3,40	53,10	47,59	28,80
11	66,28	18	3,43	53,55	47,76	28,98
12	54,79	24	3,43	53,85	47,95	29,14
13	51,92	24	3,44	54,04	48,07	29,21
14	64,14	21	3,46	54,40	48,38	29,30
15	64,60	20	3,46	54,59	48,52	29,40
16	61,75	12	3,48	54,50	48,24	29,47
17	31,93	15	3,50	54,18	47,75	29,48
18	18,40	10	3,50	53,63	47,15	29,52
19	15,74	23	3,49	52,94	46,31	29,57
20	24,85	13	3,48	52,26	45,71	29,66
21	29,00	15	3,48	51,60	45,35	29,70
22	29,63	16	3,46	50,97	45,01	29,74
23	31,47	19	3,46	50,85	44,81	29,81
24	30,79	19	3,46	50,82	44,80	29,92
25	25,35	23	3,47	50,88	44,83	29,94
26	25,29	24	3,48	51,00	44,84	29,99
27	24,93	29	3,49	51,14	44,80	30,05
28	31,96	23	3,52	51,32	44,95	30,11
Totals/ Avrgs	3,96	27,3	0,97	4,83	46,42	29,02

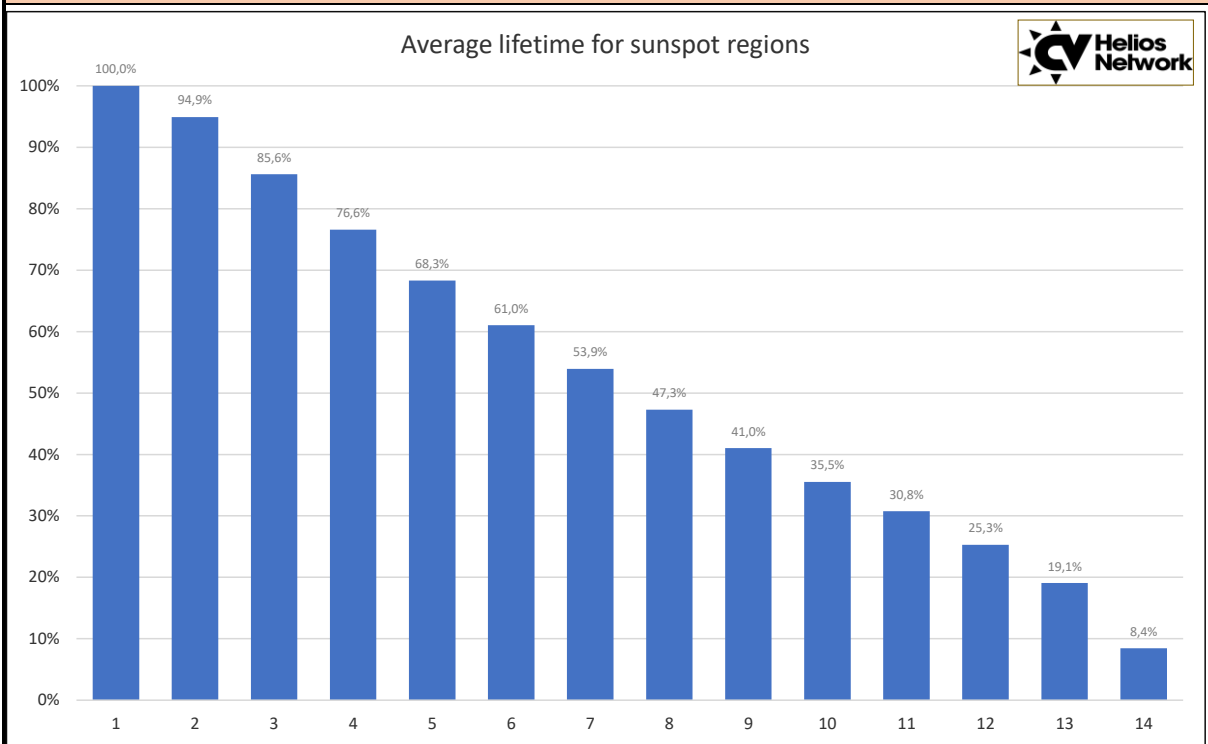


Product: Weekly Highlights and Forecasts

Highlights of Solar and Geomagnetic Activity
07 - 13 March 2022

Solar activity was at low levels most of the period with the exception of 11 Mar when it reached moderate levels due to an M2/Sf flare at 11/2232 UTC from Region 2964 (S28, L=012, class/area Dso/070 on 10 Mar). Associated with the M2 flare was a CME off the SW limb beginning at 12/0000 UTC in SOHO/LASCO C2 imagery. WSA-Enlil analysis showed no Earth-directed component. Two other CMEs had Earth-directed components, however. The first was on 06 Mar that began as a filament eruption in the NE quadrant centered near N15W35 beginning at 06/2252 UTC. A subsequent CME was observed off the NW limb beginning at 07/0000 UTC. WSA-Enlil analysis showed a glancing blow arrival late on 10 Mar. The second was associated with a long duration C2 flare at 10/2045 UTC near Region 2962 (N26, L=324, Cro/030 on 06 Mar). A partial halo CME was observed from that event beginning at 10/1912 UTC. WSA-Enlil analysis showed an impact arrival around late on 13 Mar.

Monthly graph



The average lifetime in days for sunspot regions 1982-2022

News February 2022

Solar activity is low to average and number of regions are slowly increasing. The CV as 13-rot. centered averages are now considerably higher than for solar cycle 24 at the same time of progress from minimum!
 The solar flux is now ahead with almost 21 percent (!) and CV-I 13-rot. ahead compared to cycle 24!
 Sunspot region production at Month 26 is still good. A total of 212 regions produced this cycle per mid March 22.
 Last 12 months 155 sunspot regions have visualised. The highest number of regions since Oct 2016!

List of 7 significant sunspot regions exceeding 50 mvh developing in February 2022:

The LARGEST SUNSPOT REGIONS (>=100 mvh) 01.10-30.10 were:

Reg.-First-Last--Lat.-Long.-Rot.-Area - ZMcl-history

- 2934: 20.01-01.02 Lat S23, Lo 172 Rt. 2253 120 m., CV 10,0, HSX HSX HSX HSX HSX HSX HSX HSX HSX HSX HSX HSX HSX HSX
- 2936: 25.01-05.02 Lat N17, Lo 117 Rt. 2253 606 m., CV 45,6, CRO DSI DAI DKC DKC EHC EHI EKI DKI EKI EKO EKO
- 2939: 30.01-11.02 Lat S16, Lo 033 Rt. 2253 225 m., CV 22,5, CSO DHO DHO DHO DHO DSO CSO CSO CSO CSO CSO CSO HSX
- 2940: 31.01-11.02 Lat N17, Lo 034 Rt. 2253 185 m., CV 19,5, CSO DKI DAO CAI DAI DAO DAO DAO DAO DAO DAO HRX
- 2941: 03.02-16.02 Lat N24, Lo 338 Rt. 2254 279 m., CV 39,5, CAO EHO EHO EHO EAO EKI EKI EKI FKI FKI EKI FAI DAO
- 2946: 11.02-19.02 Lat S9, Lo 245 Rt. 2254 51 m., CV 10,1, DSO DSO CSO HSX HSX CRO BXO BXO AXX
- 2948: 14.02-20.02 Lat S27, Lo 215 Rt. 2254 64 m., CV 13,3, DSO CSO DAO CAO CAO CSO CSO

Flare productions, M or X-types

- 12.02.2022 M1.4
- 14.02.2022 M1.0
- 15.02.2022 M1.3

Sunspot regions start date solar cycle 24 compared to start date solar cycle 25:

The production of sunspot regions has been overwhelming compared to previous solar cycle.

We reckon there have passed 852 days of the new cycle and the total for solar cycle 25 is 216 sunspot regions compared to solar cycle 24 at the same time with 149, and excess of 67 regions!

Solar Max.: Our latest prediction to occur late July 2025, earliest possibility April 2025.

Solar Flux onset expected late this year. The P-Index, rise/fall data from solar flux, This proved great activity in January 2022 and which may persist until at least March 2022. Stay tuned and observe the solar disk from now on!

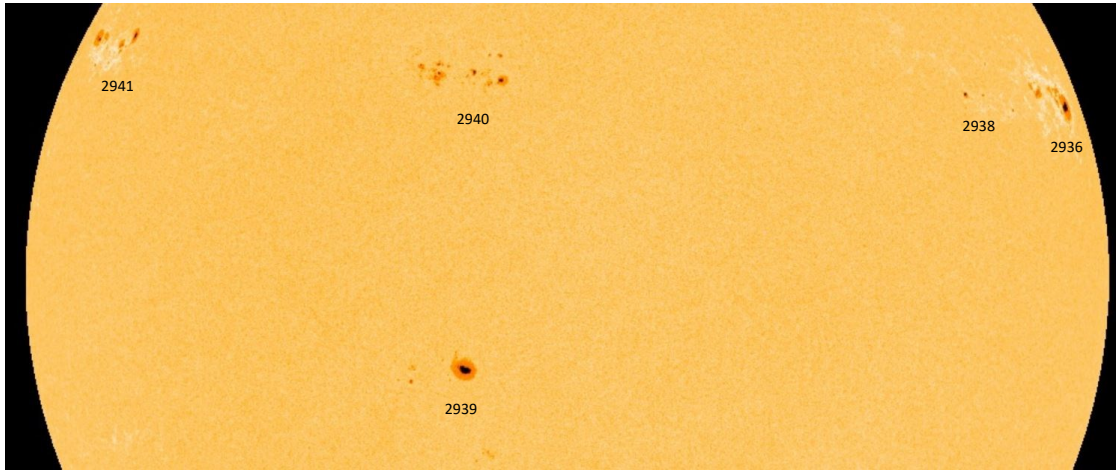
Please remember you are always welcome to contribute with drawings and photos!

Preliminary total number for year 2021 is 7327 CV-observations from 49 observers! Thanks to all of you!

The Annual Report for 2021 is due for release on April 01 as usual.

Pictures from last month - Observer contributions, etc.

Largest Regions of Feb. 2022



The most active day
4th February 2022

photo courtesy SDO/HMI NOAA gov

Awards this month

1

Award no.: 146 to CV-181 ADAM DERDZIKOWSKI date 12 February 2022 milestone 1000 CV-obs.!
CONGRATULATIONS!

Congratulations!




New members:

Welcome to:

none

We are now 51 active members (last 12 mo.)

Solar Coordinates	New from April 2020
Daily list of Solar Ephemeris available at: Daily list of Solar Ephemeris and SDO on grid Here you can see Today's Po, Bo, Lo, Rotation no., RA and Dec. and adjusted SOHO-picture on grid.	
Calculating CV	
For your convenience and security, use the mif2021, https://www.cv-helios.net/mif2021.xlsx the Monthly Input Form, which you can use for all of your next reportings!	
Monitor MPR daily progress	
CV-Helios Network: Monitor MPR progress as entries are made! Monitor your submissions as they are registered: https://cv-helios.net/helios/cv/web/mprpost.html The data are available fresh from about 10:00 UTC until local midnight. Content comprises CV-Report for latest month, CV-Report for latest month individual results, Extracts from NOAA on forecasts/discussion, Extracts from NOAA warehouse on SRS and other activity, Last 24 months CV-data, This month CV acc. to USAF	
Registration data	
Check if your CV-observations have been registered (please allow up to 24 hrs): https://www.cv-helios.net/helios/cv/web/datlist.htm https://www.cv-helios.net/helios/cv/web/cvobsmonth.htm for checking of Entries Summary	
CONTRIBUTE WITH YOUR PHOTOS AND OTHER OF INTEREST!	
We would like YOU to contribute with drawings or photos from last month Also any other contribution that may have an interest for our observers. Please send by email to: cvhelios@gmail.com	
Please check out www.cv-helios.net/cvrep2.html for updates of files!	
<u>SUBMISSIONS OF CV-OBSERVATIONS</u>	
Log on to: https://www.cv-helios.net/observations/index.html Classification Help login solaris password cvheliosobs Monthly Input Form as excel Submission before 15th of proceeding month 18:00 UTC. (password: cvhelios) MPR issue 15th of proceeding month 2000 UTC. Good luck CV-observing!	
Average received to registered time: 0 day 16 hours 43 minutes	
CV-Helios Network - over 40 years in solar amateur astronomy service! There are now Entries reg.: 12380 entries registered containing 199176 CV-observations! Last 12 months 7393 CV-observations from 49 observers originating from 18 countries	
Editorial close: 15.03.2022 14:39 UTC	
 CV-Helios Network	